

Beautiful Diamond Bridal jewellery with a wide selection of designs to choose from. All designs are available to order in 9ct Gold, 18ct Gold and Platinum. These fantastic pieces are made to order in 4-5 weeks.

VINTAGE GRAIN SET



HET1041 0.17ct



HET1461 0.25ct



HET1771



HET1792



HET2094 0.40ct



HET2121 0.65ct

ROUND CHANNEL SET



HET8971 0.07ct



HET935 0.15ct



HET2358 0.20ct



HET936 0.22ct



HET 2088 0.25ct



HET1240 0.25ct



HET8603 0.33ct



HET1310 0.50ct



HET2108 0.75ct



HET 2619 1.00ct



HET1323 1.50ct



HET1443 2.00ct

PRINCESS CUT CHANNEL / BAGUETTE CUT CHANNEL



HET1174 0.20ct



HET1157 0.33ct



HET993 0.50ct



HET1301 0.75ct



HET2107 1.00ct



HET1165 1.50ct



HET941 0.30ct



HET1019 0.50ct



HET924 0.33ct



HET925 0.56ct



HET927 1.00ct



HET1190 2.00ct

MICRO CLAW SET / SHARED CLAW



HET1973 0.25ct



HET1023 0.33ct



HET2004 0.50ct



HET2005 0.75ct



HET2057 1.00ct



HET8931 1.50ct



HET1686 0.25ct



HET2982 0.33ct



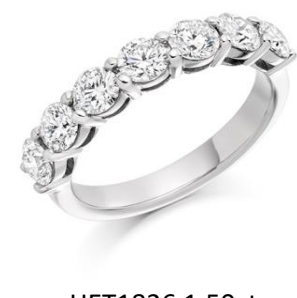
HET1493 0.50ct



HET2704 0.75ct



HET1494 1.00ct



HET1826 1.50ct

CURVED AND CUT OUT BANDS (SHAPED)



HET2302 0.30ct



HET1182 0.16ct



HET1203 0.33ct



HET1138 0.25ct



HET8699 0.30ct



HET4354A 0.35ct



HET2286 0.25ct



HET1730 0.18ct



HET1731 0.37ct



HET2287 0.15ct



HET1811 0.09ct



HET2295 0.20ct

MIXED CUT CHANNEL SET



HET1083 0.30ct



HET2124 0.30ct



HET2315 0.50ct



HET909 0.76ct



HET910 1.08ct



HET1144 1.50ct



HET9415 0.50ct



HET9416 0.75ct



HET9417 1.00ct



HET917 0.50ct



HET918 0.75ct



HET919 1.00ct

BAR SET & RUBOVER SET



HET1843 0.50ct



HET1845 1.00ct



HET1221 0.50ct



HET2169 0.75ct



HET1947 1.00ct



HET2636 0.60ct



HET2503 0.25ct



HET1411 0.50ct



HET9145 0.35ct



HET1427 0.50ct



HET2388 0.50ct



HET2390 1.00ct

OFFSET BANDS & DESIGNER RINGS



HET1152 0.12ct



HET2298 0.15ct



HET948 0.26ct



HET2301 0.22ct



HET950 0.25ct



HET2167 0.30ct



HET1805 0.22ct



HET1136 0.26ct



HET2073 0.70ct



HET1017 0.75ct



HET9323 0.50ct



HET1295 1.25ct



HET1117 1.05ct



HET1911 1.20ct



HET1077 0.75ct



HET1525 0.25ct



HET2743 0.35ct



HET1359 1.35ct